

# User manual

Edition 8, 2024 May

## Q2M mounting systems



**mo-vis**  
moving forward together

## Other languages

CS: Tito příručku naleznete v češtině na našich webových stránkách.

DA: Du kan finde denne manual på dansk på vores websted.

DE: Auf unserer Website finden Sie diese Anleitung in Deutsch.

EN: You can find this manual in English on our website.

ES: Este manual está disponible en español en nuestro sitio web.

FR: Vous pouvez trouver ce manuel en français sur notre site Web.

IT: nostro sito web è disponibile il presente manuale in italiano.

NO: Du finner denne håndboken på norsk på nettstedet vårt.

NL: De Nederlandse handleiding kunt u op onze website vinden.

PT: Pode encontrar este manual em português na nossa página web.

SL: Slovenski priročnik je na voljo na naši spletni strani.

SV: Du hittar den här handboken på svenska på vår webbplats.

**You can find the latest version of all our manuals on the website.**

# About this manual

## User manual

Thank you for choosing a mo-vis product!



This manual contains **useful and important information** about your device. **Please read it carefully before use and store safely for future reference.**

Our team (or your authorized dealer) will be happy to answer your questions.

## mo-vis bv



Biebuyckstraat 15D . 9850 Deinze . Belgium  
<http://www.mo-vis.com> . [contact@mo-vis.com](mailto:contact@mo-vis.com) . +32 9 335 28 60



CH-REP: SKS Rehab AG, Im Wyden, 8762 Schwanden GL, Switzerland.



UK Responsible Person: QServe Group UK, Ltd., 49 Greek Street, London, W1D 4EG, UK.

# User manual

## Warning labels

*Please read this manual, the safety instructions and warning texts carefully, in order to reduce the risks associated to the device. Our products are safe under normal and reasonably foreseeable operating conditions.*



**NOTE:** This symbol indicates general notes and information.



**CAUTION:** This symbol indicates caution for a hazardous situation that, if not avoided, could result in minor or moderate injury.



**WARNING:** This symbol indicates a warning for a hazardous situation that, if not avoided, could result in death or serious injury.

Other labels:



Catalogue number: indicates the manufacturer's catalogue number so that the medical device can be identified.



Batch code: indicates the manufacturer's batch code so that the batch or lot can be identified.



Medical device: indicates that the item is a medical device.







Date of manufacture: indicates the date when the medical device was manufactured.



Serial number: indicates the manufacturer's serial number so that a specific medical device can be identified.



Consult instructions for use or consult electronic instructions for use: indicates the need for the user to consult the instructions for use.

	Keep dry: indicates a medical device that needs to be protected from moisture.
	Do not use if package is damaged and consult instructions for use: indicates that a medical device should not be used if the package has been damaged or opened and that the user should consult the instructions for use for additional information.
CE	CE label: indicates that the manufacturer or importer affirms the good's conformity with European health, safety, and environmental protection standards.
	WEEE: indicates that the product should not be discarded as unsorted waste but must be sent to separate collection facilities for recovery and recycling.
	Manufacturer: indicates the medical device manufacturer.

## Support, scrapping & recycling

### Technical support



#### TROUBLE:

- Contact your dealer
- If your dealer is not available or unknown, please contact mo-vis: or +32 9 335 28 60.

### Spare parts and accessories

### Scrapping & recycling

The expected lifetime of this device is 5 years.



**CAUTION:** For scrapping, adhere to your local waste legislation. Dispose of obsolete electronic parts responsibly in accordance with local recycling regulations.

## Important information

**⚠ CAUTION:** Incorrect use or installation may lead to risk of injury to the user and damage to the wheelchair or other property. In order to reduce these risks, you should carefully read this manual, paying particular attention to the safety instructions and warning texts.

**📄 NOTICE:** Only install this product on a wheelchair where the wheelchair manufacturer allows the installation of third party parts.

## Intended use

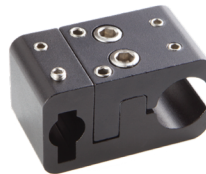
The Quick-to-mount (Q2M) mounting system is the collective name for a set of small and intelligent 'building modules', made of light but durable and robust metal. It has an elegant, black design and is modular expandable.

The Q2M mounting system is intended to mount small and light devices, such as joysticks, switches, phone holders, tablet holders etc. in a very flexible and modular way.

## Parts and accessories

### *Q2M Universal Clamp (M007-01)*

A universal and adjustable mounting clamp to be fixed on a tube with diameter of 19-26 mm and with a slot for the insertion of a flat (20 - 6 mm) or round (D 10 mm) bar.



## Q2M Clamp D6 (M004-07) and D8 (M004-14)

The clamps D6 and D8 exist in a thickness of 6 or 8 mm and come in a set of 10 pieces. They can be fixed in any position with an Allen wrench.



## Q2M Rods D6 (M004-74/75/76/77/78) and D8 (M004-83/84/85)

The rods exist in different lengths:

- with D6: 50 mm - 100 mm - 200 mm - 300 mm - 400 mm
- with D8: 50 mm - 100 mm - 200 mm

The rods are available in a set of 10 pieces.



**NOTE:** The rods and clamps have been designed so that they can be easily connected to each other (see cover). You choose the distances and angles by tightening or loosening the clamps via an Allen wrench. Adjustments can be done any time. If you don't have an Allen key, replace the bolt of the clamp by a mini clamping lever (M5 or M6x25mm).



**NOTE:** The D8 and D6 clamps and rods can be combined when you mix a D8 and D6 clamp. Take the upper part of an D8 clamp and the lower parts of a D6 clamp. Assemble and fix both parts with the bolt of the D6 clamp.



**NOTE:** The rods can be bent with a Q2M bending tool (TMHAT00005). Place a rod in the corresponding bending slot (D6, D8 or D10) and bend the rod until the needed angle. The maximum bending angle is around 90°. Bending the rod more than 90° will damage the coating of the anodized aluminum rods. The damage consists of small visible cracks in the surface of the curved part of the aluminum bar.

### ***Q2M Rod Lock (M008-04)***

The rod lock is a rotating swing system that can be locked in any position and fits in the Q2M Universal Clamp. Just slide a rod of D6 in it and fix the rod in the Quick Swing receiver with an Allen key.



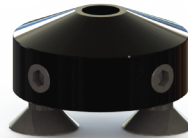
### ***Q2M Clamp D6 Split (M004-26)***

This clamp is specially used with Twisters on Bended Tube. The split makes it possible to slide in the cable of a Twister on Bended Tube. These clamps are available in a set of 10 pieces.



### ***Q2M Mounting Base D6 (M004-22) and D8 (M004-23)***

The Q2M Mounting Base D6/D8 is a small but firm mounting base to mount small accessories on any flat surface, such as a wheelchair tray. By tightening the 2 provided screws with an Allen wrench, you fix the Q2M Mounting Base on a flat surface. The Mounting Base provides the base to insert a Q2M rod of D6 or D8, on which again you can add Q2M clamps and other Q2M rods to easily build the position that is needed to mount a joystick or other accessories.





### **Q2M Quick Swing (M008-03)**

The Quick Swing is a small swing away mounting system to mount and swing away small accessories (e.g. a switch) into a specific position. The Quick Swing consists of a receiver with rotating system from where the swing away round bar (D6) leaves. The Quick Swing is mounted with the Q2M Universal Clamp. The rod can be bent into the desired shape and angle in function of the customer's needs.



### **Multi Swing Mounting Set (M001-70)**

The Multi Swing Mounting Set is used by default to mount the Multi Swing (motorized mounting arm). The set consists of:

- Q2M Universal Clamp (M007-01)
- Q2M Dogbone Slide Inn (M004-11)
- Q2M Dogbone Extension Straight (M004-12)
- Q2M Dogbone Extension Right Angled (M004-13)
- Q2M Multi Swing Bracket (M004-10)



## Manual Swing Mounting Set (M004-17)

The Multi Swing Mounting Set is used by default to mount the Multi Swing (motorized mounting arm). The set consists of:

- Q2M Universal Clamp (M007-01)
- Q2M Dogbone Slide Inn (M004-11)
- Q2M Dogbone Extension Straight (M004-12)
- Q2M Dogbone Extension Right Angled (M004-13)
- Q2M Manual Swing Bracket Ass. (M004-16)



**NOTE:** For more information about mounting the Multi Swing or Manual Swing, please refer to the respective user and installation manuals.

## Q2M Rod D6-D8 60 mm (M004-90)

This rod allows you to mount a mo-vis device (e.g. Hand Warmer, Multi Joystick or Micro Joystick) on systems with rods of D8.



## Warnings and limitations



**CAUTION:** Use proper tools to install and adjust the device. The use of improper tools may cause damage to the device.



**CAUTION:** Do not tighten the screws with excessive force.



**CAUTION:** Any connection must always be secured with supplied screws.

## Cleaning

### Cleaning

- Gently remove dust and dirt with a damp cloth.
- Use only non-aggressive disinfectant cleaning agents.

### Monthly inspection

Monthly, or whenever needed, check whether:

- All bolts and screws are still firmly tightened.
- There is no damage to any wiring.
- There is no excessive wear to any of the parts.

## Limited liability

*mo-vis accepts **no liability** for personal injury or damage to property that may arise from the failure of the user or other persons to follow the recommendations, warnings and instructions in this manual.*



**CAUTION:** This product should only be installed by a qualified service engineer.



**NOTE:** All mo-vis user manuals can be found at <http://www.mo-vis.com> where they can be consulted in PDF format.



**NOTE:** In case any serious incident occurs in relation to this device, this should be reported immediately to mo-vis and the competent authority of the Member State in which the user is established.



mo-vis bv . Biebuyckstraat 15D . 9850 Deinze - Belgium  
[www.mo-vis.com](http://www.mo-vis.com) . [contact@mo-vis.com](mailto:contact@mo-vis.com) . +32 9 335 28 60

**Go to our website for more information on our products or share  
your experience with us via email.**

